



IP PHONE SYSTEM CooVox Series-U20

For Small and Medium Business

Quick Installation Guide

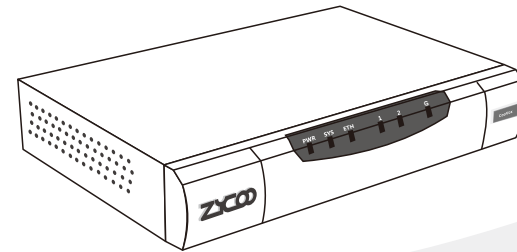


Table of Contents

1 Package Contents	02
2 Hardware Installation	03
2.1 Safety Precautions	03
2.2 Physical Connection	06
2.3 LED Definitions	07
3 Basic System Configuration	08
3.1 Web Login	08
3.2 Network Configuration	09
3.3 Reset to factory	10
4 Further Configuration	11

1 Package Contents

Thank you for purchasing ZYCOO IP phone system. These are the items Included with your IP phone system purchase:



2 Hardware Installation

The followings are the instructions for setting up ZYCOO CooVox-U20 IP PBX. Please refer to the illustration and follow the simple steps below to quickly install your IP phone.

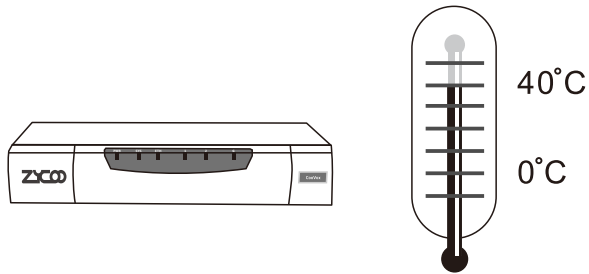
2.1 Safety Precautions

Notes:

To avoid any device damage and bodily injury caused by improper use, please observe the following rules.

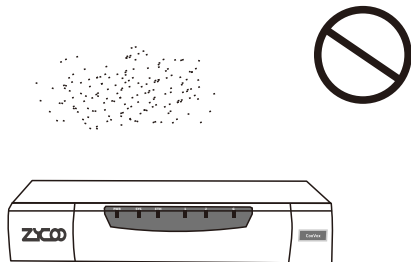
- If you remove the cover of IP PBX to install the GSM module, Keep the power off during the installation.
- Use only the power adapter provided with IP PBX.
- Make sure that the supply voltage matches the specifications indicated on the rear panel of IP PBX.
- To avoid the electric accident, do not open or remove the cover of IP PBX when it is working as well as off the power.
- Before cleaning the device, cut off the power supply. Do not clean it by the waterish cloth, and never use any other liquid cleaning method.

Site Requirements



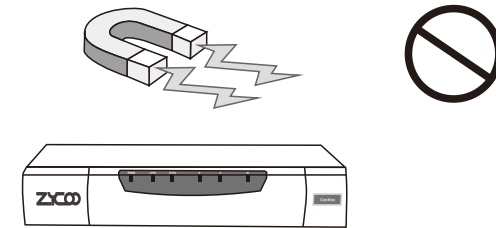
Environment	Temperature	Humidity
Operating	0°C~40°C	10%~90%RH Non-condensing
Storage	-20°C~55°C	5%~95%RH Non-condensing

Cleanness



- Dust the device regularly, and keep the indoor air clean.
- Keep the device well grounded and ensure static electricity has been transferred.

Electromagnetic Interference



Please keep Coovox-U20 far away from the electromagnetic interference to avoid any damage to the device.

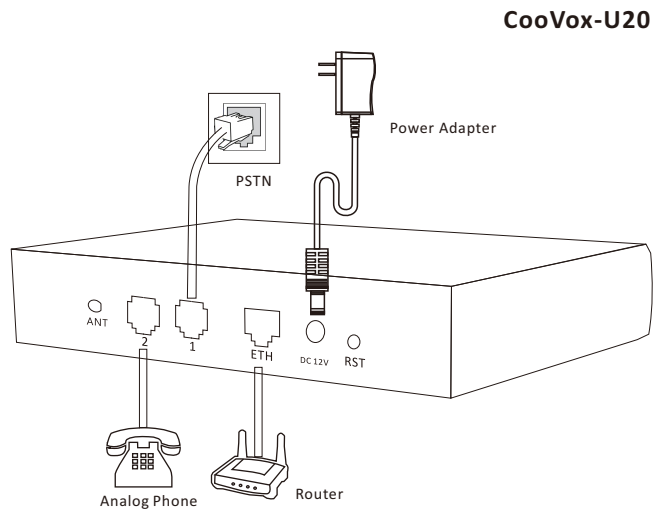
Desktop Installation

Please place the IP PBX on a steady platform

Caution:

- Please set 5~10cm gaps around the device for air circulation
- Please avoid any heavy thing placed on the device.

2.2 Physical Connection



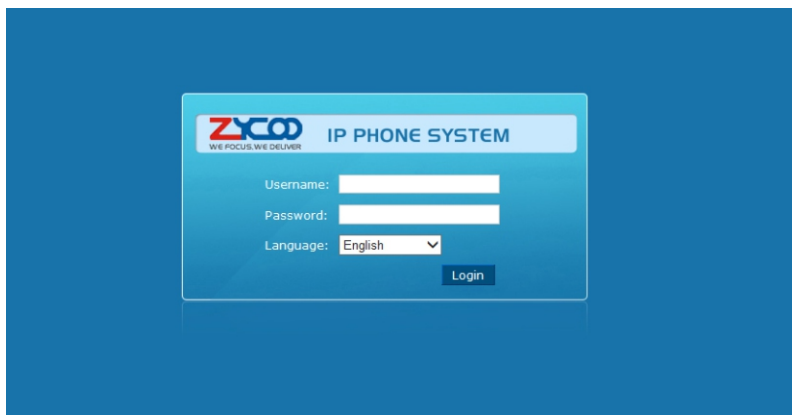
2.3 LED Definitions

Indication	Function	Status	Explanation
PWR	Power Status	On	Power On
		Off	Power Off
SYS	System Status	Blink	System Works
		Off	System Fails
ETH	WAN or LAN Data Status	Blink	Data Transport
G	GSM or UMTS(3G)Status	Off	Module not running
		64ms On/800ms Off	Module doesn't find network
		64ms On/3000ms Off	Module finds network
1	FXO	Red	Module Loading Success
		Blink	Channel Ringing
		Off	Module Loading Failure
2	FXS	Green	Module Loading Success
		Blink	Channel Ringing
		Off	Module Loading Failure

3 Basic System Configuration

3.1 Web Login

- Step 1. Connect a computer and the Coovox device in the same network. IP address is usually in the 192.168.1.X range.
- Step 2. Start a web browser. To use the user interface, you need a PC with Internet Explorer (version 7.0 or higher), Firefox, Chrome.
- Step 3. Enter the default address “http://192.168.1.100:9999” of the Coovox device into the URL address box.
- Step 4. Enter the default username (admin) and password (admin). Then click “Login” to enter the Web-based user interface.



Default URL address: http://192.168.1.100:9999
Default Username: admin
Default Password: admin

3.2 Network Configuration

- Step 1. Go to Network Settings → Network

Step 2. Configure the network information

There are three types of network connection. They are Static, DHCP, PPPoE(Point-to-Point Protocol over Ethernet). You can find detailed settings in the user manual.

WAN Port Setup	
IP Assign:	Static
Hostname:	DHCP
	PPPoE
IP Address:	192.168.1.100
Subnet Mask:	255.255.255.0
Gateway:	192.168.1.1
Primary DNS:	8.8.8.8
Alternate DNS:	

3.3 Reset to factory

To reset the IP address to the default IP Address “192.168.1.100” (ETH) or reset the login password to default value, press the hardware reset button at the front panel more than 5 seconds. After the device is rebooted, you can login the management WEB interface within the same subnet of 192.168.1.x.

Press the “Reset” button, and all the system data will be reset to default; so if possible, back up the configuration file before reset.

4 Further Configuration

Thank you for the purchase of ZYCOO products. The above steps introduce simple configuration for CooVox – U20. For further configuration, please refer to the user’s manual. If you have other questions, please contact the local dealer or distributor from which you purchased this product.

You can also browse our online FAQ resource at the ZYCOO Web site first to check if it could solve your issue. If you need more support, please contact ZYCOO support team.

ZYCOO online FAQ:
www.zycoo.com/html/Knowledge_Base.html

Support team email address:
support@zycoo.com

Copyright © ZYCOO Co., Ltd. 2014

